

Access Management Plan for Lafayette MPO

Prepared by

LCG Traffic and Transportation Department

2010

Draft Plan, Do not Distribute

Special Acknowledgments:

This document is a modification of the Model Land Development
and Subdivision Regulations That Support Access Management

Model prepared by _____.

Draft Plan, Do not Distribute

For Further Information

For further information on this or other areas of access management consult FHWA's Access Management website at www.accessmanagement.com

Model Land Development and Subdivision

Regulations That Support Access Management

- Section 1. Intent and Purpose
- Section 2. Applicability
- Section 3. Conformance with Plans, Regulations, and Statutes
- Section 4. Definitions
- Section 5. Access Management Classification System and Standards
- Section 6. Corner Clearance
- Section 7. Joint and Cross Access
- Section 8. Functional Area of Intersection
- Section 9. Interchange Areas
- Section 10. Access Connection and Driveway Design
- Section 11. Requirements for Outparcels and Phased Development Plans
- Section 12. Emergency Access
- Section 13. Transit Access
- Section 14. Nonconforming Access Features
- Section 15. Corridor Access Management Overlay
- Section 16. Reverse Frontage
- Section 17. Flag Lot Standards
- Section 18. Lot Width-to-Depth Ratios
- Section 19. Shared Access
- Section 20. Connectivity
- Section 21. Minor Subdivisions
- Section 22. Private Roads
- Section 23. Regulatory Flexibility
- Section 24. Site Plan Review Procedures
- Section 25. Variance Standards

The following model ordinance language is provided for adoption into the local land development code. Local governments should obtain professional planning and legal assistance when adapting this model language to fit local needs. Although a regulatory program is essential, it is further recommended that local governments prepare subarea plans for high priority corridors that are experiencing development pressure.

Section 1. Intent and Purpose

The intent of this ordinance is to provide and manage access to land development, while preserving the regional flow of traffic in terms of safety, capacity, and speed. Major thoroughfares, including highways and other arterials, serve as the primary network for moving people and goods. These transportation corridors also provide access to businesses and homes and have served as the focus for commercial and residential development. If access systems are not properly designed, these thoroughfares will be unable to accommodate the access needs of development and retain their primary transportation function. This ordinance balances the right of reasonable access to private property, with the right of the citizens of the Lafayette Consolidated Government and the State of Louisiana to safe and efficient travel.

To achieve this policy intent, state and local thoroughfares have been categorized by function and classified for access purposes based upon their level of importance, with highest priority on the Louisiana Intrastate High-way System and secondary priority on the primary network of regional arterials. Regulations have been applied to these thoroughfares for the purpose of reducing traffic accidents, personal injury, and property damage attributable to poorly designed access systems, and to thereby improve the safety and operation of the roadway network. This will protect the substantial public investment in the existing transportation system and reduce the need for expensive remedial measures. These regulations also further the orderly layout and use of land, protect community character, and conserve natural resources by promoting well-designed road and access systems and discouraging the unplanned subdivision of land.

Section 2. Applicability

This ordinance shall apply to all roads which are classed Access Class 1-5 AC1-AC5 within Lafayette Parish, as identified in Table 1 (Table of classed roads), and to all properties that abut these roadways. On these classed roads that are on State Highways, developers will be required to meet the most restrictive classification either from current and/or LA DOTD classed roads or LCG.

Section 3. Conformance with Plans, Regulations, and Statutes???

This ordinance is adopted to regulate Access management in Lafayette Parish as set forth in the (name local comprehensive plan). In addition, this ordinance conforms with (cite specific policies) of the Metropolitan Planning Organization (MPO) as specified in the (name of long range transportation plan), and the planning policies of the Louisiana Department of Transportation set forth in the Louisiana Transportation Plan. The ordinance also conforms to the access classification system and standards of the Louisiana Department of Transportation, the access management requirements of the Louisiana Intrastate Highway System Program, and policy and planning directives of the federal Intermodal Surface Transportation Efficiency Act of 1991.

Commentary: The link between regulations and public policy has undergone intense legal scrutiny in recent years. To establish this link, local governments should clearly identify the intent and purpose of

the regulatory program, and specify any plans, state and federal regulations, or statutes that will be carried out through the regulatory standards. It is also important to cite specific planning policies that are being advanced through these regulations. Local governments in designated transportation management areas may also cite access management as a congestion management measure in accordance with the federal Intermodal Surface Transportation Efficiency Act of 1991. Communities that do not lie within the planning area boundaries of a Metropolitan Planning Organization (MPO) would simply leave out the reference to MPOs in this section. Demonstrating conformance with state and federal law, and with the local comprehensive plan, is important in strengthening the legal basis for any local regulatory program.

Section 4. Definitions

Access - A way or means of approach to provide vehicular or pedestrian entrance or exit to a property.

Access Classification - A ranking system for roadways used to determine the appropriate degree of access management. Factors considered include functional classification, the appropriate local government's adopted plan for the roadway, subdivision of abutting properties, and existing level of access control.

Access Connection - Any driveway, street, turnout or other means of providing for the movement of vehicles to or from the public roadway system.

Access Management - The process of providing and managing access to land development while preserving the regional flow of traffic in terms of safety, capacity, and speed.

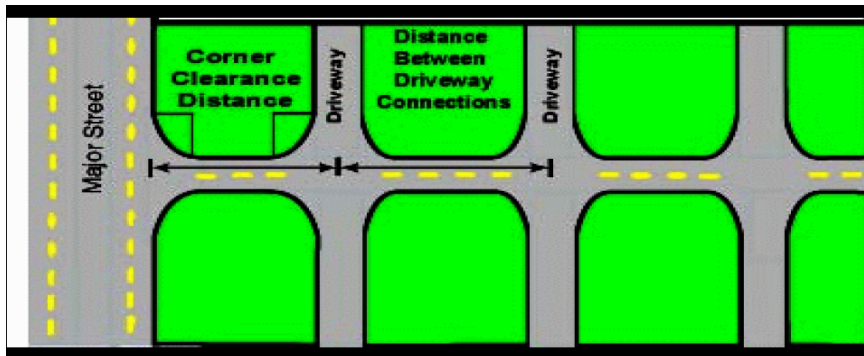
Access Management Plan (Corridor) - A plan illustrating the design of access for lots on a highway segment or an interchange area that is developed jointly by the state, the metropolitan planning organization, and the affected jurisdiction(s).

Cartway - That area of road surface from curb line to curb line or between the edges of the paved or hard surface of the roadway, which may include travel lanes, parking lanes, and deceleration or acceleration lanes.

Connection Spacing - The distance between connections, measured from the closest edge of pavement of the first connection to the closest edge of pavement of the second connection along the edge of the traveled way.

Corner Clearance - The distance from an intersection of a public or private road to the nearest access connection, measured from the closest edge of the pavement of the intersecting road to the closest edge of the pavement of the connection along the traveled way. (see Figure 1)

Figure 1: Corner Clearance and Connection Spacing

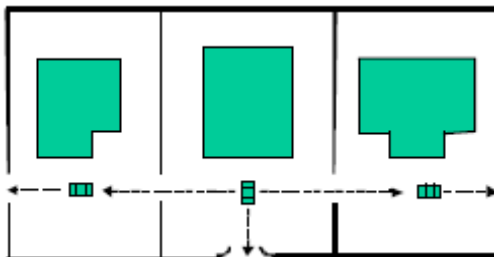


Corridor Overlay Zone - Special requirements added onto existing land development requirements along designated portions of a public thoroughfare.

Connectivity Index – In a cordoned area, the number of street links divided by the number of nodes.

Cross Access - A service drive providing vehicular access between two or more contiguous sites so the driver need not enter the public street system.

Figure 2: Example of Cross Access



Deed - A legal document conveying ownership of real property.

Directional Median Opening - An opening in a restrictive median which provides for specific movements and physically restricts other movements. Directional median openings for two opposing left or “U-turn” movements along a road segment are considered one directional median opening.

Easement - A grant of one or more property rights by a property owner to or for use by the public, or another person or entity.

Louisiana Intrastate Highway System - The specially designated statewide system of limited access and controlled access facilities, as designated by LADOTD and adopted by the legislature, that allows for high-speed and high-volume traffic movement within the state.

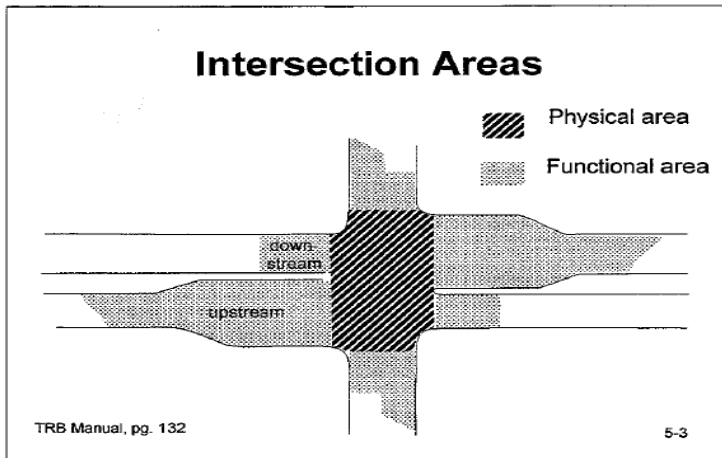
Frontage Road - A public or private drive which generally parallels a public street between the right-of-way and the front building setback line. The frontage road provides access to private properties while

separating them from the arterial street. (see also Service Roads)

Full Median Opening - An opening in a restrictive median that allows all turning movements from the roadway and the intersecting road or access connection.

Functional Area (Intersection) - That area beyond the physical intersection of two controlled access facilities that comprises decision and maneuver distance, plus any required vehicle storage length, and is protected through corner clearance standards and driveway connection spacing standards

Figure 3: Functional Area of Intersection



Functional Classification - A system used to group public roadways into classes according to their purpose in moving vehicles and providing access.

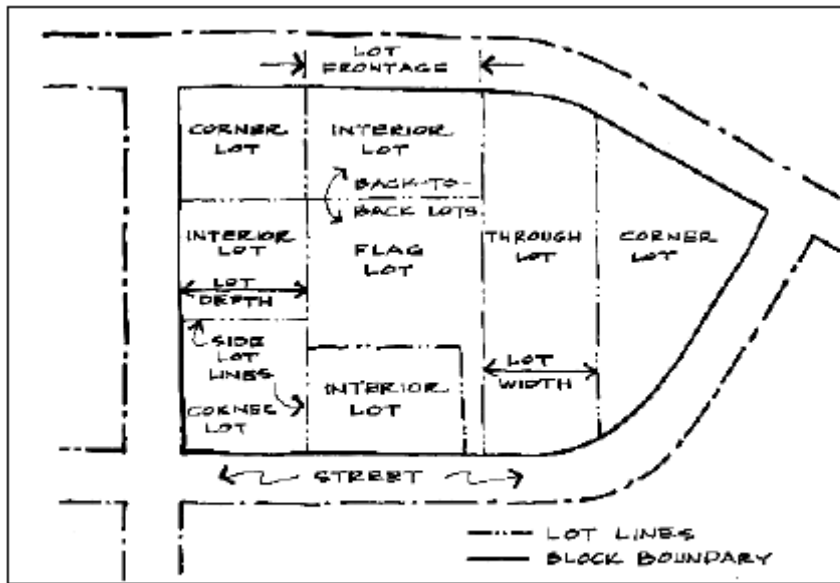
Green Book, The Louisiana (Manual of Uniform Minimum Standard for Design, Construction, and Maintenance) - A manual produced by the Louisiana Department of Transportation which provides for uniform standards and criteria for transportation facilities for both state and local roads.

Intrastate Highway System - (see Louisiana Intrastate Highway System)

Joint Access (or Shared Access) - A driveway connecting two or more contiguous sites to the public street system.

Lot - A parcel, tract, or area of land whose boundaries have been established by some legal instrument, which is recognized as a separate legal entity for purposes of transfer of title, has frontage upon a public or private street, and complies with the dimensional requirements of this code.

Figure 4: Types of Lots



Source: Moskowitz, Harvey S. and Carl G. Lindbloom. *The New Illustrated Book of Development Definitions*, New Brunswick, N.J.: Center of Urban Policy Research, Rutgers University, 1993.

Lot, Corner - Any lot having at least two (2) contiguous sides abutting upon one or more streets, provided that the interior angle at the intersection of such two sides is less than one hundred thirty-five (135) degrees.

Commentary: *Corner lots can create confusion in relation to dimensional requirements. The recommended approach is to designate one frontage as the "front" and the rear lot line would be that opposite the designated frontage. Both portions of the lot with street frontage should still be required to meet the required front yard setback to ensure adequate sight distance and consistency of setback with abutting properties. A lot abutting a curved street(s) is typically considered a corner lot if the arc has a radius less than one hundred and fifty (150) feet.*

Lot Depth - The average distance measured from the front lot line to the rear lot line.

Lot, Flag - A large lot not meeting minimum frontage requirements and where access to the public road is by a narrow, private right-of-way or driveway.

Lot, Nonconforming - A lot that does not meet the dimensional requirements of the district in which it is located and that existed before these requirements became effective.

Lot, Through (also called a double frontage lot) - A lot that fronts upon two parallel streets or fronts upon two streets that do not intersect at the boundaries of the lot.

Lot Frontage - That portion of a lot extending along a street right-of-way line.

Lot of Record - A lot or parcel that exists as shown or described on a plat or deed in the records of the Clerk of the Parish.

Lot Width - The horizontal distance between side lot lines measured parallel to the front lot line at the minimum required front setback line.

Manual of Uniform Traffic Control Devices (MUTCD) - A Federal document adopted by the Louisiana

Department of Transportation that provides standards for traffic control devices.

Minor Subdivision - A subdivision of land into not more than two (2) lots where there are no roadways, drainage, or other required improvements.

Nonconforming Access Features - Features of the access system of a property that existed prior to the date of ordinance adoption and do not conform with the requirements of this code.

Nonrestrictive Median - A median or painted centerline that does not provide a physical barrier between traffic traveling in opposite directions or turning left, including continuous center turn lanes and undivided roads.

Outparcel - A parcel of land abutting and external to the larger, main parcel, which is under separate ownership and has roadway frontage.

Parcel - A division of land comprised of one or more lots in contiguous ownership.

Plat - An exact and detailed map of the subdivision of land.

Private Road - Any road or thoroughfare for vehicular travel which is privately owned and maintained and which provides the principal means of access to abutting properties.

Public Road - A road under the jurisdiction of a public body that provides the principal means of access to an abutting property.

Reasonable Access: The minimum number of access connections, direct or indirect, necessary to provide safe access to and from the thoroughfare, as consistent with the purpose and intent of this code and any applicable plans and policies of the Lafayette MPO.

Restrictive Median - A physical barrier in the roadway that separates traffic traveling in opposite directions, such as a concrete barrier or landscaped island.

Right-of-Way - Land reserved, used, or to be used for a highway, street, alley, walkway, drainage facility, or other public purpose.

Service Road - A public or private street or road, auxiliary to and normally located parallel to a controlled access facility that maintains local road continuity and provides access to parcels adjacent to the controlled access facility.

Significant Change in Trip Generation - A change in the use of the property, including land, structures or facilities, or an expansion of the size of the structures or facilities causing an increase in the trip generation of the property exceeding 10 percent more trip generation (either peak or daily) and 100 vehicles per day more than the existing use for all roads under local jurisdiction; or exceeding 25 percent more trip generation (either peak or daily) and 100 vehicles per day more than the existing use for all roads under state jurisdiction, as defined in 335.18, F.S.

Commentary: *In 1992, the legislature amended the State Highway System Access Management Act to reduce the definition of “substantial change” from a 10% threshold to 25%, as shown above. This diminished the ability of the State to require properties with nonconforming access to the State Highway System to mitigate their nonconformity. However, local governments may adopt requirements that are more restrictive than State standards for roadways under local jurisdiction. The 10% threshold is recommended for non-state thoroughfares (see also, Nonconforming Access*

Features).

State Highway System (SHS) - The network of limited access and controlled access highways that have been functionally classified and are under the jurisdiction of the State of Louisiana.

Stub-out (Stub-street) - A portion of a street or cross access drive used as an extension to an abutting property that may be developed in the future.

Subdivision - Is the process and the result of any of the following:

- a. The platting of land into lots, building sites, blocks, open space, public areas, or any other division of land.
- b. Establishment or dedication of a road, highway, street or alley through a tract of land, by the owner thereof, regardless of area.
- c. The re-subdivision of land here to fore subdivided (however, the sale or exchange of small parcels of land to or between adjoining property owners, where such sale or exchange does not create additional lots and does not result in a nonconforming lot, building, structure or landscape area, shall not be considered a subdivision of land).
- d. The platting of the boundaries of a previously unplatted parcel or parcels.

Substantial Enlargements or Improvements - A 10% increase in existing square footage or 50% increase in assessed valuation of the structure.

Commentary: This standard is typical of many standards used to address non-conforming situations. Check these standards related to nonconforming situations against those of your code to assure consistency.

Temporary Access - Provision of direct access to the controlled access facility until that time when adjacent properties develop, in accordance with a joint access agreement or frontage road plan.

Section 5. Access Management Classification System and Standards

1. The following access classifications have been assigned to major thoroughfares under state and local jurisdiction as provided in Table 1 in accordance with Chapter 14-97, Administrative Rules of the Department of Transportation, and the requirements of this Code. These access classes are defined as follows:

Access Class 1(AC-1) - These facilities are controlled access facilities where direct access to abutting land will be controlled to maximize the through movement of traffic. This class will be used where existing land use and roadway sections have not been built out to the maximum land use or roadway capacity or where the probability of significant land use change in the near future is high. These highways are distinguished by existing or planned restrictive medians and maximum distance between signals and driveway connections. Local land use planning, zoning and subdivision regulations should be such to support the restrictive spacings of this designation. Frontage roads are included in this category.

Access Class 2(AC-2) – These facilities are controlled access highways where direct access to abutting land will be controlled to maximize the through movement of traffic. This class will be used where existing land use and roadway sections have not been built out to the maximum land use or roadway capacity or where the probability of significant land use change in the near future is high. These highways are distinguished by existing or planned non-restrictive median treatments.

Access Class 3(AC-3) – This class will be used where existing land use and roadway sections have been built out to a greater extent than those roadway segments classified as Access Classes 3 and 4 and where the probability of a major land use change is not as high as those roadway segments classified Access Classes 3 and 4. These highways will be distinguished by existing or planned restrictive medians.

Access Class 4(AC-4) – This class will be used where existing land use and roadway sections have been built out to a greater extent than those roadway segments classified as Access Classes 3 and 4, and where the probability of a major land use change is not as high as those roadway segments classified Access Classes 3 and 4. These highways will be distinguished by existing or planned non-restrictive medians or centers.

Access Class 5(AC-5) – This class shall only be used in urbanized areas where existing land use and roadway sections are built out and where significant land use changes or roadway widening will be limited. This class shall be assigned only to roadway segments where there is little intended purpose to provide high speed travel. Access needs, though generally high in those road-way segments, will not compromise the public health, welfare or safety. Exceptions to standards in this class will be considered if the applicant’s design changes substantially reduce the number of connections compared to existing conditions. These highways can have either restrictive or non-restrictive medians.

Table 1: Access Classification of State and County Roadways

Jurisdiction	Segment	Access Class
<i>State Roads:</i>		
SR 400 (I-4)	County Line to County Line	1
SR 500 (US 192-441)	Kissimmee CL to St. Cloud CL	2
SR 530 (US 192)	World Dr. to I-4	1
SR 535 (Vineland Rd.)	US 192 to County Line	2
<i>County Roads:</i>		
Bermuda Avenue	Emmett St. to Vine St.	7
Dart Blvd.	I-4 to Louisiana’s Turnpike	2
Hoagland Blvd.	Zaheed Ave. to Carroll St.	5

Neptune Rd.**Stroupe Rd. to 13th St.****6****Amend this table.**

Commentary: These access classifications reflect those of the Lafayette Consolidated Government's Traffic and Transportation department and run from the most restrictive (class 1) to the least restrictive (class 5). Access classifications are assigned to roadway segments based upon the current condition of the roadway and any planned improvements. Access Class 1 segments usually have access restrictions supported by local ordinances, land use, planning, zoning, and subdivision regulations. A

2. All connections on facility segments that have been assigned an access classification shall meet or exceed the minimum connection spacing requirements of that access classification, as specified in Table 2.

Table 2: Access Classification System & Standards

Access Class	Medians	Connection Spacing (feet)		Median Opening Spacing(feet)		Signal Spacing (feet)
		>45 mph	<45 mph	Directional	Full	
1	Existing or planned Restrictive	660	440	1320	2640	2640
2	Non restrictive	660	440			2640
3	Existing or planned Restrictive	440	245	660	2640/1320	2640/1320
4	Non restrictive	440	245			1320
5	Either restrictive or non restrictive	125		330	660	1320

3. Separation between access connections on all collectors and arterials under local jurisdiction that have not been assigned an access classification shall be based upon the posted speed limit in accordance with Table 3:

Table 3: Driveway Spacing for Nonclassified Roadways

Posted Speed Limit (MPH)	Driveway Spacing (Feet)
≤ 35	125
36-45	245
> 45	440*

*Ideally any road having a speed limit over 45 mph should be given an access management classification.

Section 6. Corner Clearance

4. Driveway spacing shall be measured from the closest edge of the pavement to the next closest edge of the pavement (see Definition section and Figure 1). The projected future edge of the pavement of the intersecting road shall be used in measuring corner clearance, where widening, relocation, or other improvement is indicated in an adopted local thoroughfare plan or five year transportation plan of the metropolitan planning organization.
5. The Lafayette Planning, zoning, and codes department may reduce the connection spacing requirements in situations where they prove impractical, but in no case shall the permitted spacing be less than 80% of the applicable standard, except as provided in Section 24.
6. If the connection spacing of this code cannot be achieved, then a system of joint use driveways and cross access easements may be required in accordance with Section 7.
7. Variation from these standards shall be permitted at the discretion of the Planning Commission where the effect would be to enhance the safety or operation of the roadway. Examples might include a pair of one-way driveways in lieu of a two-way drive-way, or alignment of median openings with existing access connections. Applicants may be required to submit a study prepared by a registered engineer to assist the Lafayette MPO in determining whether the

proposed change would exceed roadway safety or operational benefits of the prescribed standard.

Commentary: *Driveway spacing standards limit the number of driveways on a road-way by mandating a minimum separation distance between driveways. This reduces the potential for collisions as travelers enter or exit the roadway and encourages sharing of access, where appropriate. Driveway spacing at intersections and corners should provide adequate sight distance and response times and permit adequate stacking space. Driveway spacing on non classified arterials and collectors may be tied to posted speed limit, as shown here, with the minimum distance between driveways greater as speed limits increase. The method used to regulate driveway spacing does, however, vary widely across local governments. Some jurisdictions tie driveway spacing to functional classification rather than speed limit, and others provide variable spacing depending upon the land use intensity of the site served and that of adjacent sites. The standards above fall within the recommended range and are compatible with connection spacing standards in Table 2.*

1. Corner clearance for connections shall meet or exceed the minimum connection spacing requirements for that roadway.
2. New connections shall not be permitted within the functional area of an intersection or interchange as defined by the connection spacing standards of this code, unless:
 - a) No other reasonable access to the property is available, and
 - b) The Lafayette Planning, zoning, and codes department determines that the connection does not create a safety or operational problem upon review of a site specific study of the proposed connection prepared by a registered engineer and submitted by the applicant.
3. Where no other alternatives exist, the Lafayette Planning, zoning, and codes department may allow construction of an access connection along the property line farthest from the intersection. In such cases, directional connections (i.e. right in/out, right in only, or right out only) may be required.
4. In addition to the required minimum lot size, all corner lots shall be of adequate size to provide for required front yard setbacks and corner clearance on street frontage.

Section 7. Joint and Cross Access

1. Adjacent commercial or office properties classified as major traffic generators (i.e. shopping plazas, office parks), shall provide a cross access drive and pedestrian access to allow circulation between sites.

Commentary: *Adjacent shopping centers or office parks are often not connected by a service drive and sidewalk. As a result, customers who wish to shop in both centers, or visit both sites, must exit the parking lot of one, travel a short distance on a major thoroughfare, and then access the next site. A cross access drive reduces traffic on the major thoroughfare and reduces safety hazards. This in turn, can have positive business benefits by providing easy access to one site from another.*

2. A system of joint use driveways and cross access easements as shown in Figure 5 shall be established wherever feasible along (name affected corridors, including FIHS, or refer to a list) and the building site shall incorporate the following:
 - a) A continuous service drive or cross access corridor extending the entire length of each

block served to provide for driveway separation consistent with the access management classification system and standards.

- b) A design speed of 10 mph and sufficient width to accommodate two-way travel aisles designed to accommodate automobiles, service vehicles, and loading vehicles;
- c) Stubouts and other design features to make it visually obvious that the abutting properties may be tied in to provide cross-access via a service drive;
- d) A unified access and circulation system plan that includes coordinated or shared parking areas is encouraged wherever feasible.

Figure 5: Examples of Cross Access Corridor Design

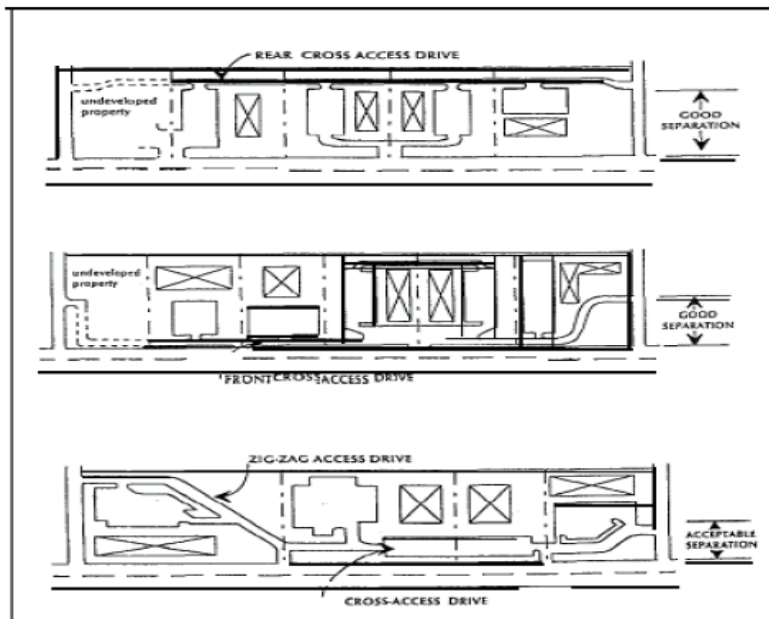
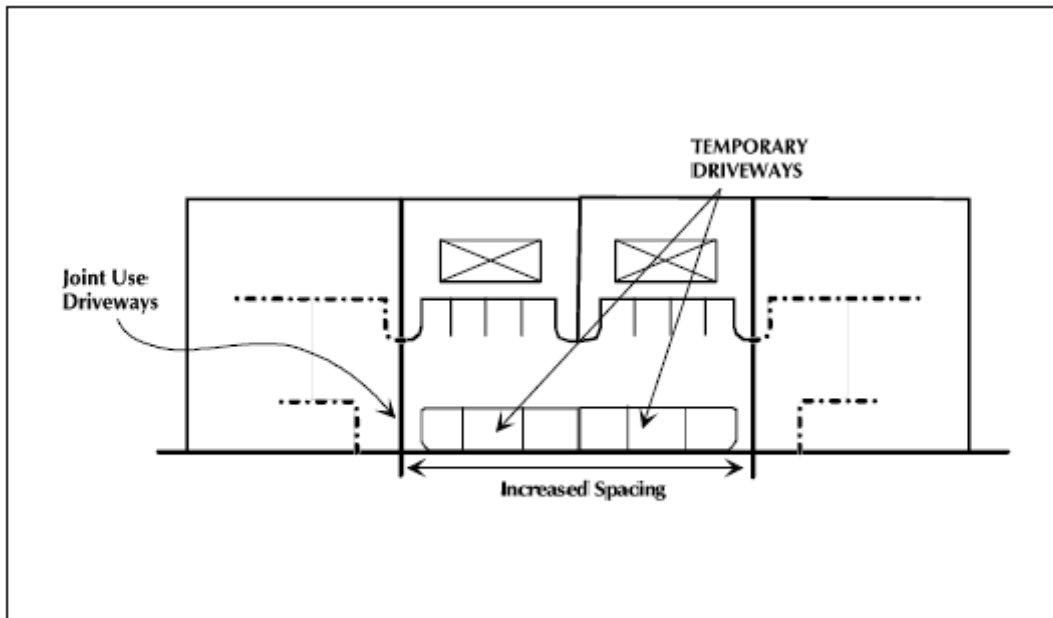


Figure 6: Joint and Cross Access



Source: City of Orlando.

3. Shared parking areas shall be permitted a reduction in required parking spaces if peak demand periods for proposed land uses do not occur at the same time periods.

Commentary: For example, a bank and a movie theater need parking for their patrons at two distinctly different times.

4. Pursuant to this section, property owners shall:

- a) Record an easement with the deed allowing cross access to and from other properties served by the joint use driveways and cross access or service drive;
- b) Record an agreement with the deed that remaining access rights along the thoroughfare will be dedicated to the Lafayette mPO and pre-existing driveways will be closed and eliminated after construction of the joint-use driveway;
- c) Record a joint maintenance agreement with the deed defining maintenance responsibilities of property owners.

Commentary: See Appendix 1 for a sample cross access agreement from the City of Orlando. These agreements must be prepared with the assistance of an attorney. The joint access provisions above were adapted from the City of Orlando Code of Ordinances, Land Development Code, Chapter 61, Roadway Design and Access Management. These provisions should be mandatory for local segments of the Louisiana Intrastate Highway System and all other major thoroughfares zoned for intensive commercial or office development. Another option is that used by the City of Orlando, who ties joint access requirements to specific zoning districts.

5. The Lafayette Planning, zoning, and codes department may reduce required separation distance of access points where they prove impractical, provided all of the following requirements are met:

- a) Joint access driveways and cross access easements are provided wherever feasible in accordance with this section.

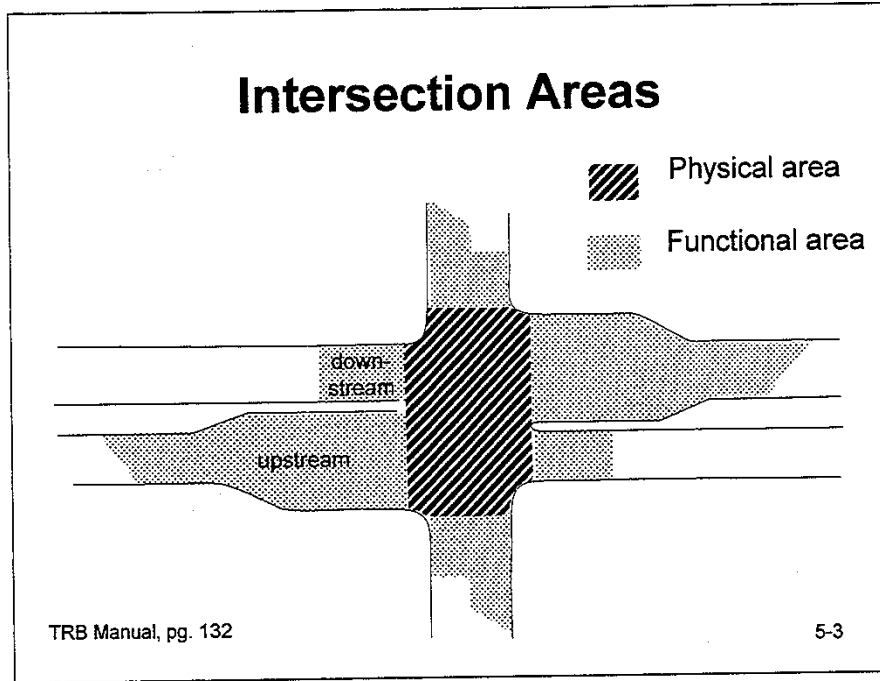
- b) The site plan incorporates a unified access and circulation system in accordance with this section.
- c) The property owner shall enter a written agreement with the Parish recorded with the deed, that pre-existing connections on the site will be closed and eliminated after construction of each side of the joint use driveway.

6. The Lafayette Planning, zoning, and codes department may modify or waive the requirements of this section where the characteristics or layout of abutting properties would make development of a unified or shared access and circulation system impractical.

Commentary: This model provides that where properties are unable to meet driveway spacing requirements, then the planning or public works official may provide for less restrictive spacing, based on the conditions that joint use drive-ways and cross access easements must be established wherever feasible. A variance is provided only where joint and cross access is not practical. Variances and other remedial actions such as those described above are necessary to prevent unusual hardship on property owners and other situations that could incur a regulatory taking. (Note: Variances and special conditions, like standards for nonconforming features, must be consistently and rigorously applied.) These standards are also applied to phased development in the same owner-ship and leasing situations. Where abutting properties are in different owner-ship, cooperation is encouraged but not required. But the building site under consideration is subject to the requirements, which are recorded as a Binding Agreement prior to issuing a building permit. Abutting properties will be brought into compliance as they are developed or initiate retrofitting requirements, as provided in Section 13. In the meantime, the property owner will be permitted a temporary curb cut and driveway that will be closed upon development of the joint use driveway.

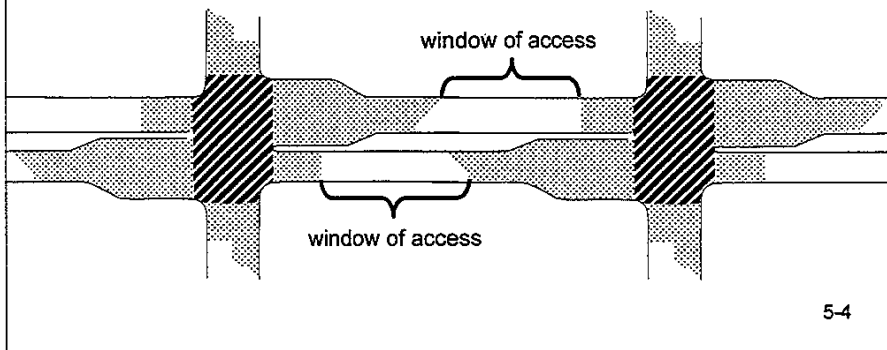
Section 8. Functional Distance of an Intersection

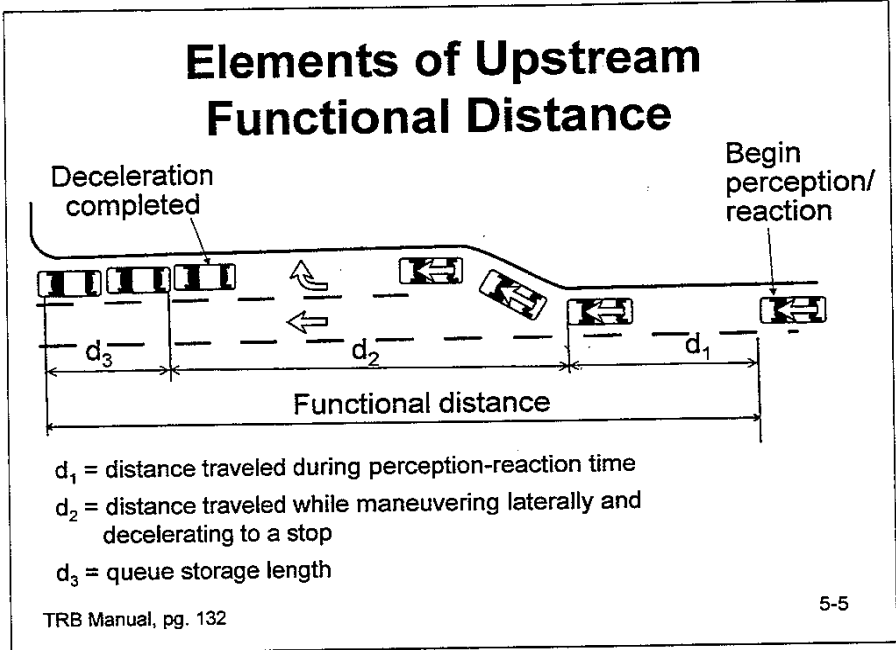
1. No driveways will be permitted within the area's set within this section.
2. The first set of diagrams illustrates the upstream functional distance of an intersection. The diagrams illustrate how to calculate this distance.



Importance of Functional Area

- Driveways should not be located within the functional area of an intersection





Distance Traveled During Perception-Reaction Time

Speed (mph)	Distance traveled, d_1 (feet)		
	1.5 sec.	2.0 sec.	2.5 sec.
20	45	60	75
30	65	90	110
40	90	115	145
50	110	145	185
60	135	175	220
70	155	205	255

Methods to Determine Distance Traveled (d_2)

- A. Deceleration/maneuver method

- B. Impact distance method

5-7

Draft Plan, Do not
contribute

Deceleration/Maneuver Distances

Speed (mph)	Distance, d_2 (ft)
20	70
30	160
40	275
50	425
60	605
70	820

5-8

Assumptions/conditions:

- 5.8 fps^2 deceleration while the driver is decelerating and moving laterally
- 6.7 fps^2 deceleration after the lateral movement has been completed and the driver is decelerating while steering straight ahead.

Exhibit 12: d₃, Example Queue Storage Lengths⁽¹⁾

Left-Turn Volume (vph)	Cycle Length (Seconds)	Customary US Units (feet)		Standard International Units (metres)	
		Single Lane	Dual Left ⁽²⁾	Single Lane	Dual Left ⁽²⁾
50	90	75	--	20	--
	120	100	--	25	--
100	90	125	--	40	--
	120	175	--	50	--
150	90	200	100	60	40
	120	250	150	75	45
200	90	250	150	80	45
	120	350	200	100	60
250	90	--	175	--	55
	120	--	250	--	75

⁽¹⁾Storage Length $L = V/N ks$

Where: V = left-turn volume per hour

N = number of cycles (time intervals per hour)

= (3600 sec/hr.)/cycles, time intervals, per hour

k = 2.0; storage length to accommodate the longest queue approximately 95% of the time (time intervals)

s = 2.5 ft. (7.6 m) storage per vehicle assumes $\leq 5\%$ large vehicles. For large vehicles $> 5\%$ of left-turn volume, multiply tabled values by:

% large vehicles	Adjustment factor
10%	1.25
15%	1.35
20%	1.50

⁽²⁾Dual left-turn lanes are suggested when the left-turn volume exceeds 200 vph.

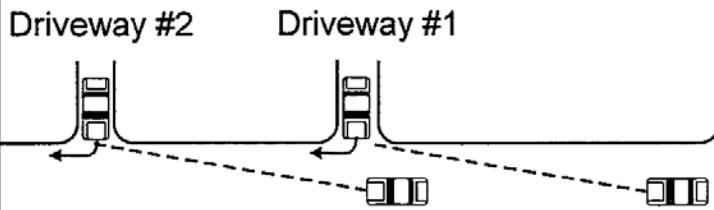
3. Methods to calculate downstream functional distance of an intersection.

Methods to Calculate Downstream Functional Distance

- A. Right-turn conflict overlap
- B. Stopping sight distance

5-15

Right-Turn Conflict Overlap



TRB Manual, pg. 152

5-16

Minimum Right-Turn Conflict Overlap Distances

Speed (mph)	Minimum Distance (ft)
30	185
35	245
40	300
45	350

TRB Manual, pg. 152

5-17

Downstream Functional Distances Based on Stopping Sight Distances (SSD)

Speed (mph)	SSD (ft)
20	115
30	200
40	305
50	425
60	570

5-18

Source: AASHTO 'Greenbook' 2004 edition, Exhibit 3-1, page 112

Section 9. Interchange Areas

1. New interchanges or significant modification of an existing interchange will be subject to special access management requirements to protect the safety and operational efficiency of the limited access facility and the interchange area, pursuant to the preparation and adoption of an access management plan. The plan shall address current and future connections and median openings within 1/4 mile of an interchange area (measured from the end of the taper of the ramp furthest from the interchange) or up to the first

intersection with an arterial road, whichever is less.

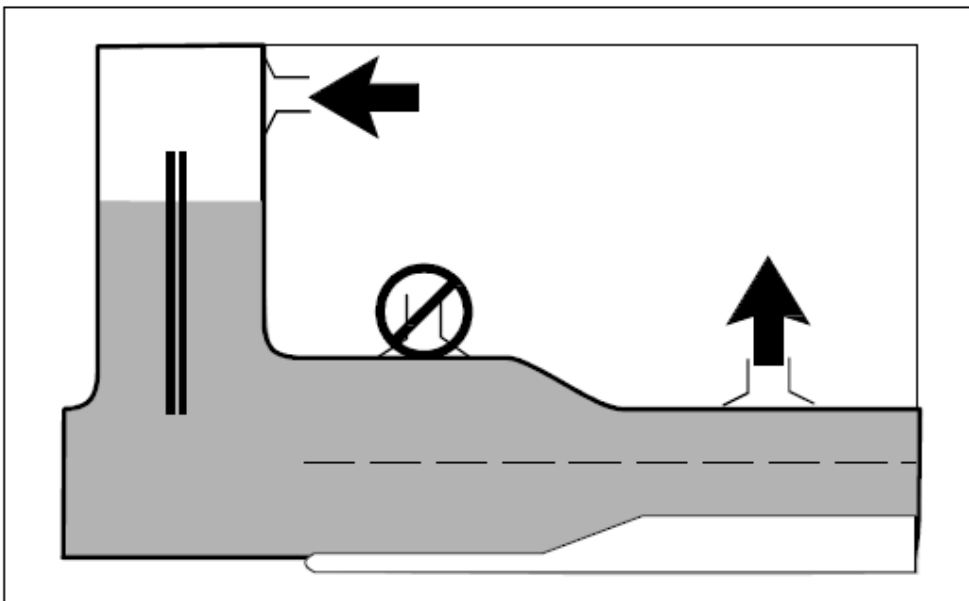
2. The distance to the first connection shall be at least 660 feet where the posted speed limit is greater than 45 mph or 440 feet where the posted speed limit is 45 mph or less. This distance shall be measured from the end of the taper for that quadrant of the interchange.
3. The minimum distance to the first median opening shall be at least 1320 feet as measured from the end of the taper of the egress ramp.

Commentary: *New highway interchanges can have substantial impacts on land development patterns around the interchange area. In turn, if land development is not properly planned it can create safety hazards and interfere with the flow of traffic onto and off of the interchange. An access management plan would identify the appropriate access system around the interchange area, in accordance with a desired land development plan. Such a plan would also incorporate minimum spacing requirements for new interchanges required by the Louisiana Department of Transportation. These standards are provided above for incorporation into the local code.*

Section 10. Access Connection and Driveway Design

1. Driveway grades shall conform to the requirements of **LADOTD Standard Index, Roadways and Traffic Design Standard Indices, latest edition**. Driveway approaches must be designed and located to provide an exiting vehicle with an unobstructed view. Construction of driveways along acceleration or deceleration lanes and tapers is discouraged due to the potential for vehicular weaving conflicts (see Figure 7).

Figure 7: Driveway Location



2. Driveway width and flair shall be adequate to serve the volume of traffic and provide for rapid movement of vehicles off of the major thoroughfare, but standards shall not be so excessive as to pose safety hazards for pedestrians, bicycles, or other vehicles.

Commentary: *The Louisiana Department of Transportation requires local governments to*

adhere to certain minimum design standards in the design and location of access connections or other traffic control features. These standards are contained in three separate but related technical documents: the Standard Index (Roadway and Traffic Design Standards); the "Louisiana Green Book" (Manual of Uniform Minimum Standard for Design, Construction, and Maintenance); and the MUTCD (Manual of Uniform Traffic Control Devices. The standards shown in Table 4 were adapted from the latest edition of the Standard Index.

5. The length of driveways or "Throat Length" (see Figure 8) shall be designed in accordance with the anticipated storage length for entering and exiting vehicles to prevent vehicles from backing into the flow of traffic on the public street or causing unsafe conflicts with on-site circulation. General standards appear in Table 5 but these requirements will vary according to the projected volume of the individual driveway. These measures generally are acceptable for the principle access to a property and are not intended for minor driveways. Variation from these shall be permitted for good cause upon approval of the (City/Parish Traffic Engineer or Public Works Official).

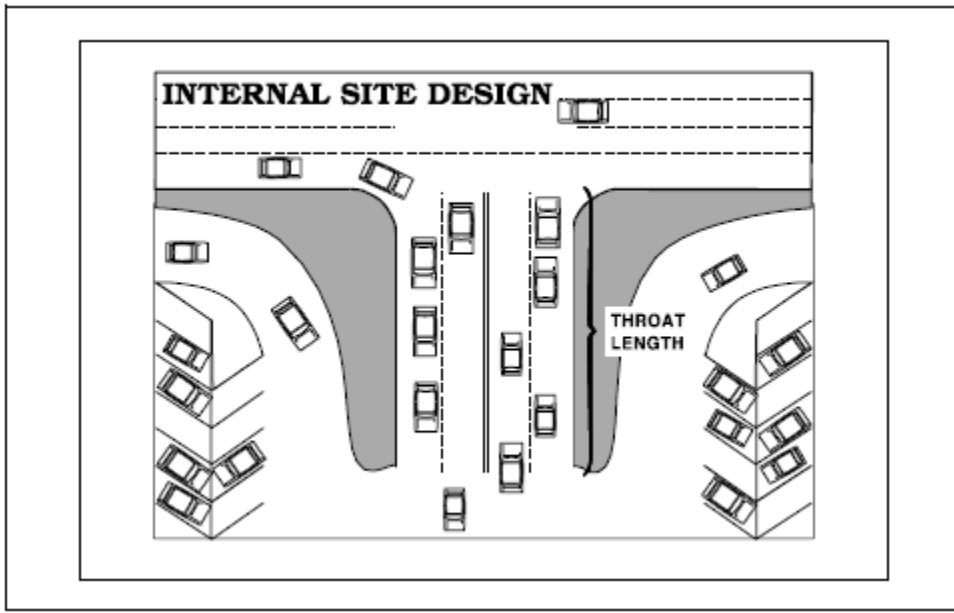
Table 5: Generally Adequate Driveway Throat Lengths

Shopping Centers > 200,000 GLA	200'
Smaller Developments < 200,000 GLA	75'-95'
Unsignalized driveways	40'-60'

Source: Vergil G. Stover, P.E., Ph.D. (As updated from Transportation and Land Development, Institute of Transportation Engineers, 1988.).

Commentary: The throat lengths in Table 5 are provided to assure adequate stacking space within driveways for general land use intensities. This helps prevent vehicles from stacking into the thoroughfare as they attempt to access the site. High traffic generators, such as large shopping plazas, need much greater throat length than smaller developments or those with unsignalized driveways. The guidelines here for larger developments refer to the primary access drive. Lesser throat lengths may be permitted for secondary access drives serving large developments.

Figure 8: Driveway Throat Length



Section 11. Requirements for Outparcels and Phased Development Plans

1. In the interest of promoting unified access and circulation systems, development sites under the same ownership or consolidated for the purposes of development and comprised of more than one building site shall not be considered separate properties in relation to the access standards of this code. The number of connections permitted shall be the minimum number necessary to provide reasonable access to these properties, not the maximum available for that frontage. All necessary easements, agreements, and stipulations required under Section 7 shall be met. This shall also apply to phased development plans. The owner and all tenants within the affected area are responsible for compliance with the requirements of this code and both shall be cited for any violation.
2. All access to the outparcel must be internalized using the shared circulation system of the principle development or retail center. Access to outparcels shall be designed to avoid excessive movement across parking aisles and queuing across surrounding parking and driving aisles.
3. The number of outparcels shall not exceed one per ten acres of site area, with a minimum lineal frontage of 300 feet per outparcel or greater where access spacing standards for that roadway require. This frontage requirement may be waived where access is internalized using the shared circulation system of the principle development or retail center. In such cases the right of direct access to the roadway shall be dedicated to the City/Parish Government and recorded with the deed.

Commentary: *The Louisiana Department of Transportation in its administrative rule on Access Management Standards (14-97.003(1)(g)) has attempted to manage the proliferation of individual access connection requests by separate properties under the same ownership. Essentially, this section states that adjacent properties under single ownership will be treated as one property unless the applicant can show the Department that the two properties should have separate access due to safety concerns (for example, a concrete plant next to a child care center). Marketing of the two properties is not a valid reason to have them treated as separate properties. The rule also states*

that leasehold interests in existence before February 12, 1991 (the effective date of Rule 14-97) may be considered separate properties.

??Section 12. Emergency Access??

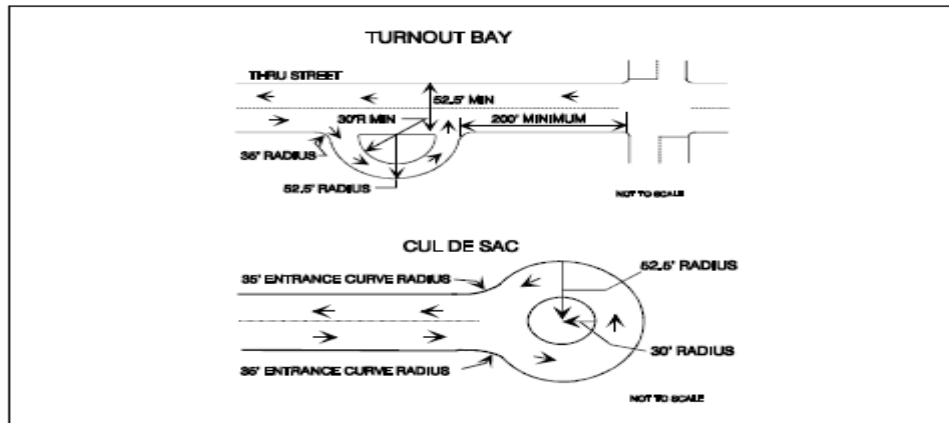
1. In addition to minimum side, front, and rear yard setback and building spacing requirements specified in this code, all buildings and other development activities such as landscaping, shall be arranged on site so as to provide safe and convenient access for emergency vehicles.

Section 13. Transit Access

1. In commercial or office zoning districts where transit service is available or is planned to be available within five years, provisions shall be made for adequate transit access, in the form of turn around loops or turnout bays. At a minimum, in the case of a loop or cul-de-sac, entrance curves shall have a 35 foot radius, and the internal circle shall have an inside radius of 30 feet and an outside radius of 52.5 feet. In the case of turnout bays, the curve radius shall be 35 feet, the distance from the roadside edge to the inside edge of the outside radius shall be 52.5 feet (see Figure 9)

Figure 9: Transit Bus Turning Radii

Draft Plan, Do not Distribute



Source: Maryland Department of Transportation, Mass Transit Administration. Access by Design: Transit's Role in Land Development, A Developer's Manual. September 1988.

Commentary: The bus turnaround standards in Figure 8 are provided for transit access along major commercial and office corridors to assure safe and convenient transit access. Bus turnarounds are also useful in circumstances where circulation via the internal street system of a development would be impractical based on cost, design constraints, or the need to maintain timely service. These bus turnarounds are based upon the turning radius of a standard 40 foot bus.

Section 14. Nonconforming Access Features

1. Permitted access connections in place as of (**date of adoption**) that do not conform with the standards herein shall be designated as nonconforming features and shall be brought into compliance with applicable standards under the following conditions:
 - a) When new access connection permits are requested;
 - b) Substantial enlargements or improvements;
 - c) Significant change in trip generation; or
 - d) As roadway improvements allow.

Commentary: Nonconforming access features may continue in the same manner after adoption of land development regulations—a process known as “grandfathering.” This protects the substantial investment of property owners and recognizes the expense of bringing those properties into conformance. Yet the negative impacts of nonconforming properties may be substantial, depending upon the degree of nonconformity. Nonconforming properties may pose safety hazards, increase traffic congestion, reduce property values, degrade the environment, and undermine community character. To address the public interest in these matters, land development regulations include conditions or circumstances where nonconforming features must be brought into conformance. Opportunities to bring nonconforming features into compliance typically occur after a change of ownership when the costs of required improvements may be amortized in the business loan or mortgage, thereby minimizing financial hardship. It is essential that these standards be consistently and rigorously applied and enforced and that data and other information supporting these decisions be well documented, or the community could be open to legal challenges regarding due process considerations.

2. If the principal activity on a property with nonconforming access features is discontinued for a consecutive period of (180 or 365) days, or discontinued for any period of time without a present intention of resuming that activity, then that property must thereafter be brought into conformity with all applicable connection spacing and design requirements, unless otherwise exempted by the permitting authority. For uses that are vacant or discontinued upon the effective date of this code, the (180 or 365) day period begins on the effective date that this code is adopted.

Commentary: The Access Management Act (335.182(3)(b) F.S.) defines in law that any property that expands its tripmaking potential by 25% and at least 100 trips per day needs to be evaluated as a possible new permit. However, this definition does not provide guidance on when a property that has been out of service for a long period of time should be required to undergo reevaluation and obtain a new permit. The Louisiana Department of Transportation is currently trying to further clarify when a vacant or abandoned property must obtain a new permit due to a Significant Change in property use. What is being proposed for the new Administrative Rule 14-96 (Access Permit Procedures) is a definition that requires a new permit if the intended use of property is stopped for one year. Local governments may choose to do the same for consistency or be more restrictive and provide only a 180 day grace period.

Section 15. Corridor Access Management Overlay

1. The minimum lot frontage for all parcels with frontage on (name affected segments of thoroughfares here or refer to a list) shall not be less than the minimum connection spacing standards of that thoroughfare, except as otherwise provided in this Section. Flag lots shall not be permitted direct access to the thoroughfare and interior parcels shall be required to obtain access via a public or private access road in accordance with the requirements of this Code.

Commentary: Overlay zones are an effective method for managing access along commercial corridors. The technique is used to add a special set of requirements to those of an existing zoning district or districts. Section 14(1) is for those major thoroughfares or portions of major thoroughfares under state or local jurisdiction that are not already extensively subdivided and are not planned for commercial or intensive development in the near future. This approach requires that any lot fronting designated thoroughfares (usually those with an assigned access classification) have a minimum lot frontage that meets or exceeds the minimum connection spacing standard for those thoroughfares. This may be as high as 660 feet on Access Class 3 thoroughfares with a speed limit greater than 45 mph, or as low as 245 feet for Access Class 6 thoroughfares with a speed limit less than 45 mph. Existing lots with less frontage would continue as nonconforming lots. Section 14(1) standards impose large minimum lot frontage requirements to coordinate with desired connection spacing. Such requirements could disperse development and should not be applied in areas intended for intensive development. They are designed for rural and semi-rural stretches of the state (or county) highway system.

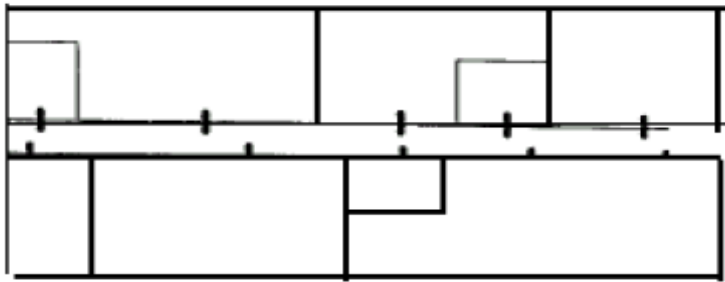
2. The following requirements shall apply to segments of designated thoroughfares that are planned for commercial or intensive development. All land in a parcel having a single tax code number, as of (date of adoption), fronting on (define segment of affected thoroughfare or refer to a Table defining affected segments), shall be entitled one (1) driveway/connection per parcel as of right on said public thoroughfare(s). When subsequently subdivided, either as metes and bounds parcels or as a recorded plat, parcels designated herein shall provide access to all newly created lots via the permitted access connection. This may be achieved through subdivision roads, joint and cross access,

service drives, and other reasonable means of ingress and egress in accordance with the requirements of this Code. The following standards shall also apply:

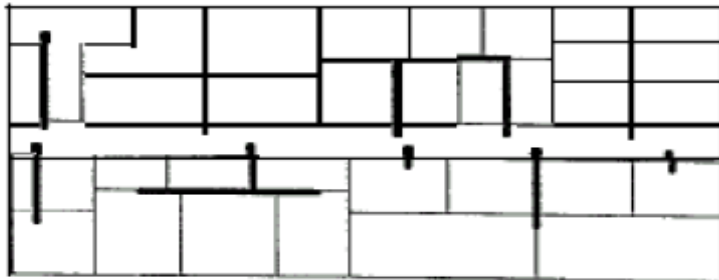
- a) Parcels with large frontages may be permitted additional driveways at the time of adoption of these requirements provided they are consistent with the applicable driveway spacing standards.
- b) Existing parcels with frontage less than the minimum connection spacing for that corridor may not be permitted a direct connection to the thoroughfare under this Section where the Planning Commission determines alternative reasonable access is available to the site. [*Note: The Planning Commission could allow for a temporary driveway as provided in Section 7 with the stipulation that joint and cross access be established as adjacent properties develop.*]
- c) Additional access connections may be allowed where the property owner demonstrates that safety and efficiency of travel on the thoroughfare will be improved by providing more than one access to the site.
- d) No parking or structure other than signs shall be permitted within (10-50) feet of the roadway right-of-way. The (10-50) will provideadequate sight visibility for vehicles exiting the site. Property owners shall be permitted to landscape the right-of-way, pursuant to an approved landscaping plan.
- e) Permitted connections shall be identified on a map that shall be adopted by reference and that portion of a corridor affected by these overlay requirements shall be delineated on the Parish zoning map with hatch marks.

Commentary: *The regulations in Section 14(2) are intended for corridors that are planned for commercial or intensive development and have not already been extensively subdivided into small lot frontages. Such corridors may or may not be currently zoned for commercial or mixed use development, but may already be experiencing development pressure. This approach focuses, rather than disperses, development along corridors while maintaining regional mobility through access management. The Section 14(2) overlay “freezes” allowable access to one connection by right per existing lot or parcel at the time of adoption. Lots or parcels may be extensively subdivided, but all future lots must obtain access via the access connections permitted at the time of overlay adoption.*

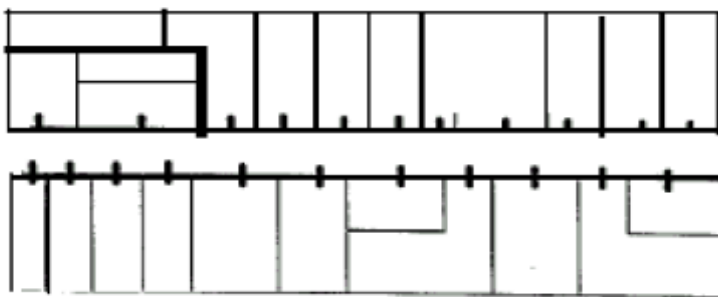
This overlay approach allows for continued subdivision and development of land while stimulating joint access, local roads, and other alternatives to direct thoroughfare access in the site design process (see Figure 10). These permitted connections must be designated on a map and adopted with the overlay requirements. For flexibility, additional driveways may be permitted for large parcels that meet or exceed the minimum access spacing standards for that thoroughfare, or where safety would be increased. Parcels with small frontages at the time of adoption are not permitted a driveway on the thoroughfare where this would create a safety hazard or where alternative reasonable access is available. In such cases a temporary driveway could be permitted under joint access requirements.



Permitted access
connections for Corridor A
at time of Overlay adoption



Potential subdivision and
access on Corridor A
after adoption.



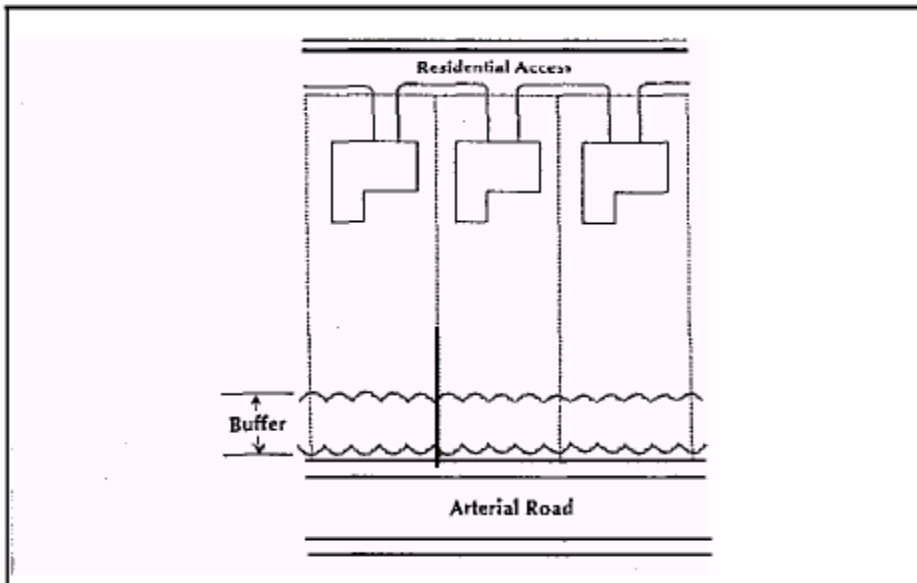
Potential subdivision and
access on Corridor A
without overlay standards.

Local governments are also encouraged to apply design guidelines that enhance community character, including standards for pedestrian access and landscaping. Section 14(2)(d) above is one potential standard for improving the visual quality of commercial corridors through landscaping and setbacks. The setback between the right-of-way and the parking area or structure should at a minimum be 10 feet. Some communities require as much as 50 feet. The appropriate standard will vary according to local preferences and existing right-of-way. If the existing right-of-way is very small, for example, then the buffer should be increased and vice versa. Some communities are also promoting side and rear parking, or shared parking areas, to reduce the appearance of asphalt from the street and provide for a more pleasing site design

Section 16. Reverse Frontage

1. Access to double frontage lots shall be required on the street with the lower functional classification.
2. When a residential subdivision is proposed that would abut an arterial, it shall be designed to provide through lots along the arterial with access from a frontage road or interior local road (see Figure 11). Access rights of these lots to the arterial shall be dedicated to the City/Parish and recorded with the deed. A berm or buffer yard may be required at the rear of through lots to buffer residences from traffic on the arterial. The berm or buffer yard shall not be located within the public right-of-way.

Figure 11: Reverse Frontage



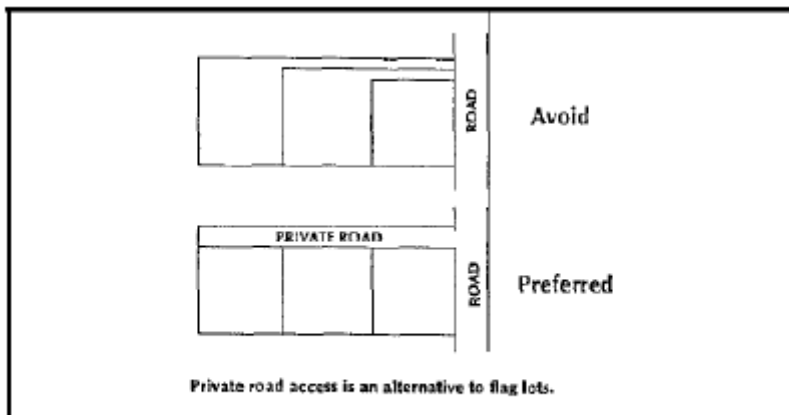
Commentary: If your community lacks any standards governing reverse frontage, it is essential that such standards be adopted. These standards are currently applied by many communities and are highly effective in preventing safety hazards caused by direct residential access to high speed roadways.

Section 17. Flag Lot Standards

1. Flag lots shall not be permitted when their effect would be to increase the number of properties requiring direct and individual access connections to the State Highway System or other major thoroughfares.
2. Flag lots may be permitted for residential development, when deemed necessary to achieve planning objectives, such as reducing direct access to thoroughfares, providing internal platted lots with access to a residential street, or preserving natural or historic resources, under the following conditions:
 - a) Flag lot driveways shall be separated by at least twice the minimum frontage requirement of that zoning district.
 - b) **The flag driveway shall have a minimum width of 20 feet and maximum width of 50 feet.**

- c) In no instance shall flag lots constitute more than 10% of the total number of building sites in a recorded or unrecorded plat, or three lots or more, whichever is greater.
- d) The lot area occupied by the flag driveway shall not be counted as part of the required minimum lot area of that zoning district.
- e) No more than one flag lot shall be permitted per private right-of-way or access easement.

Figure 12: Flag Lots and Alternative Access



Source: K. Williams, T. McCauley, and M. Wyckoff. *Land Division and Access Controls*. Michigan Society of Planning Officials, Lansing: Planning and Zoning Center Inc., April 1990.

Commentary: Local plat maps often reveal lots shaped like flags with long narrow access “poles”. Flag lots are especially prevalent along lakes, rivers, cul-de-sacs, and rural highways. Although they can be useful where natural features or land division patterns create access problems, they are subject to abuses. Flag lots proliferate in some areas where property owners use the technique to avoid plat review and further subdivide land. The result is a subdivision that lacks adequate access and creates long term problems for the community and those who purchase the lots. Where the narrow frontages abut a thoroughfare, they afford inadequate spacing between driveways and increase safety hazards from vehicles turning on and off the high speed roadway. Because flag lots often violate driveway spacing standards on the state highway system, they also create problems for the buyer who later attempts to build on the property and obtain a driveway permit. Under these standards existing flag lots would be nonconforming and allowed to continue. In areas where flag lots proliferate on a state or county thoroughfare, property owners should be contacted and strongly encouraged to consolidate access with adjacent properties—especially in the case of abutting flag lots.

Section 18. Lot Width-to-Depth Ratios

1. To provide for proper site design and prevent the creation of irregularly shaped parcels, the depth of any lot or parcel shall not exceed **3 times its width (or 4 times its width in rural areas)**. The permitted depth shall be higher in coastal areas subject to erosion.

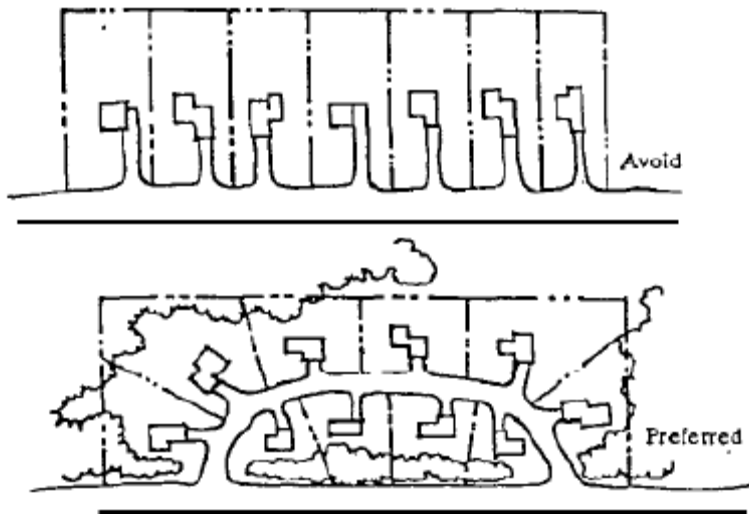
Commentary: Minimum lot frontage and maximum lot width-to-depth ratios prevent the creation of long and narrow or irregularly shaped lots that can lead to access and circulation problems. This standard is especially useful in rural areas, to govern the dimensions of newly created lots and

parcels. *Note: Rural areas may adopt a maximum width-to-depth ratio of 1:4, meaning that parcels with 100 feet of frontage may not be deeper than 400 feet. Urban or suburban areas may use maximum ratios of 1:2.5 or 1:3. Width-to-depth ratios could be set as high as 1:7 in coastal areas that have a high risk of erosion and some-what deeper lots may be permitted along arterials to provide for berms or buffer yards in reverse frontage situations.*

Section 19. Shared Access

1. Subdivisions with frontage on the state highway system shall be designed into shared access points to and from the highway. Normally a maximum of two accesses shall be allowed regardless of the number of lots or businesses served (see Figure 13).
2. Direct access to individual one and two family dwellings shall be prohibited on the Louisiana Intrastate Highway System.
3. Subdivisions on a single residential access street ending in a cul-de-sac shall not exceed 25 lots or dwelling units, and the cul-de-sac shall have a minimum cartway radius of 30 foot.

Figure 13: Shared access on Major Thoroughfares



Commentary: *Subdivisions served by a single access street ending in a cul-de-sac may inhibit emergency access and increase traffic congestion during peak hours by providing only one point of ingress and egress. Single access problems may also result in phased subdivisions where additional access is proposed for future phases. If future phases are not built, the remaining subdivision may have insufficient access. Although this is not a problem where only a few dwelling units are served, how many lots is too many? Average daily trips for residential streets provide a baseline for access and cul-de-sac standards. Listokin and Walker (1989) recommend that when a subdivision on a single access residential access street exceeds 25 lots (or 25 dwelling units), it should have at least two access points. A minimum turning radius that accommodates emergency vehicles should be required for cul-de-sacs.*

*The above provisions for shared access are intended to prevent a proliferation of driveways on the state highway system—a common problem in some semi-rural and rural areas. Provisions for shared access also promote land development patterns that are more compatible with the rural character of the landscape. The shared access standard in Section 18(12) was taken from the landmark guidebook *Dealing with Change in the Connecticut River Valley*, and can be used together with conservation easements and clustering provisions to pre-serve natural resources. (see Yaro, Arendt, et al., *Dealing with Change in the Connecticut River**

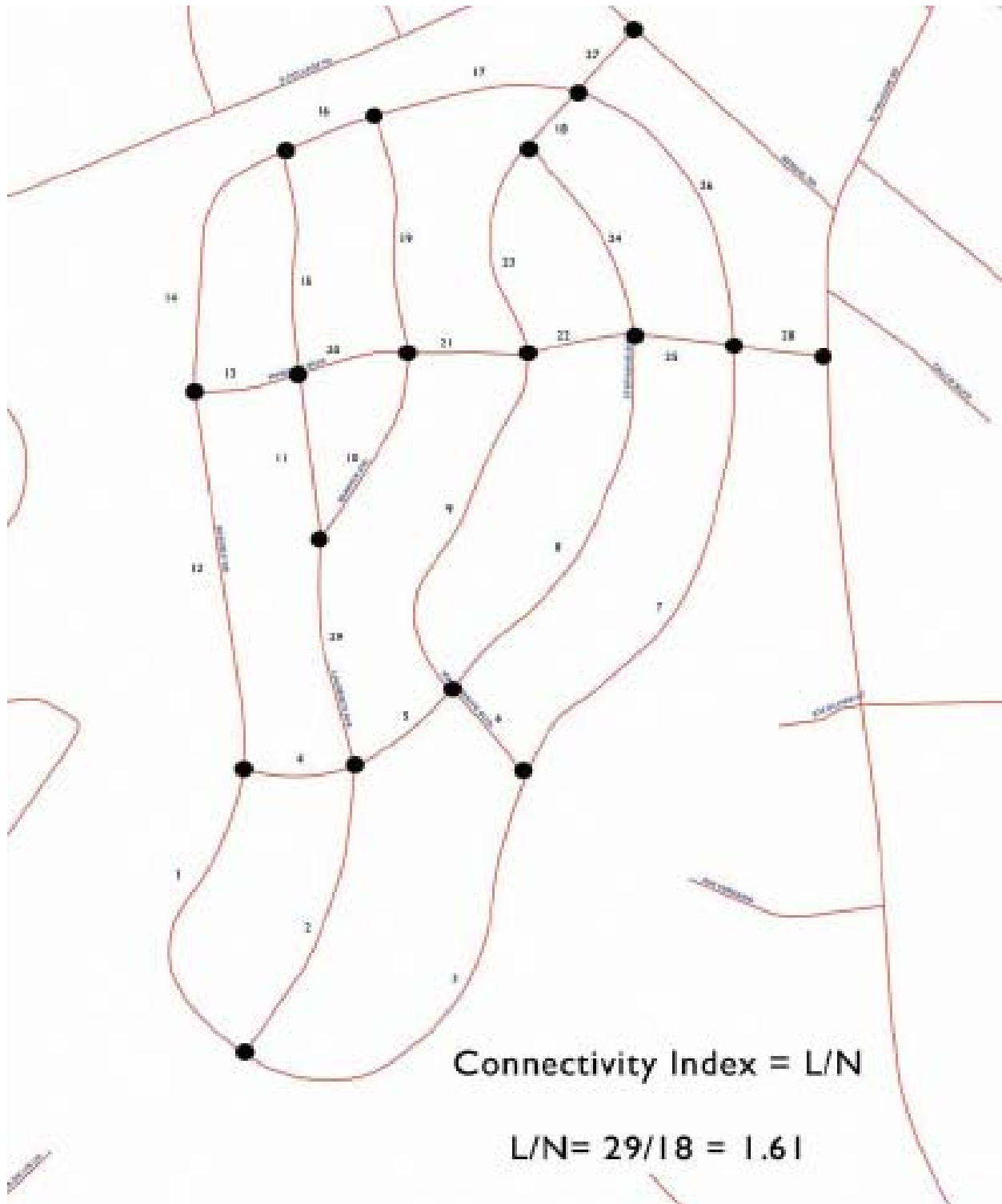
Valley: A Design Manual for Conservation and Development. Amherst: Lincoln Institute of Land Policy, 1988.)

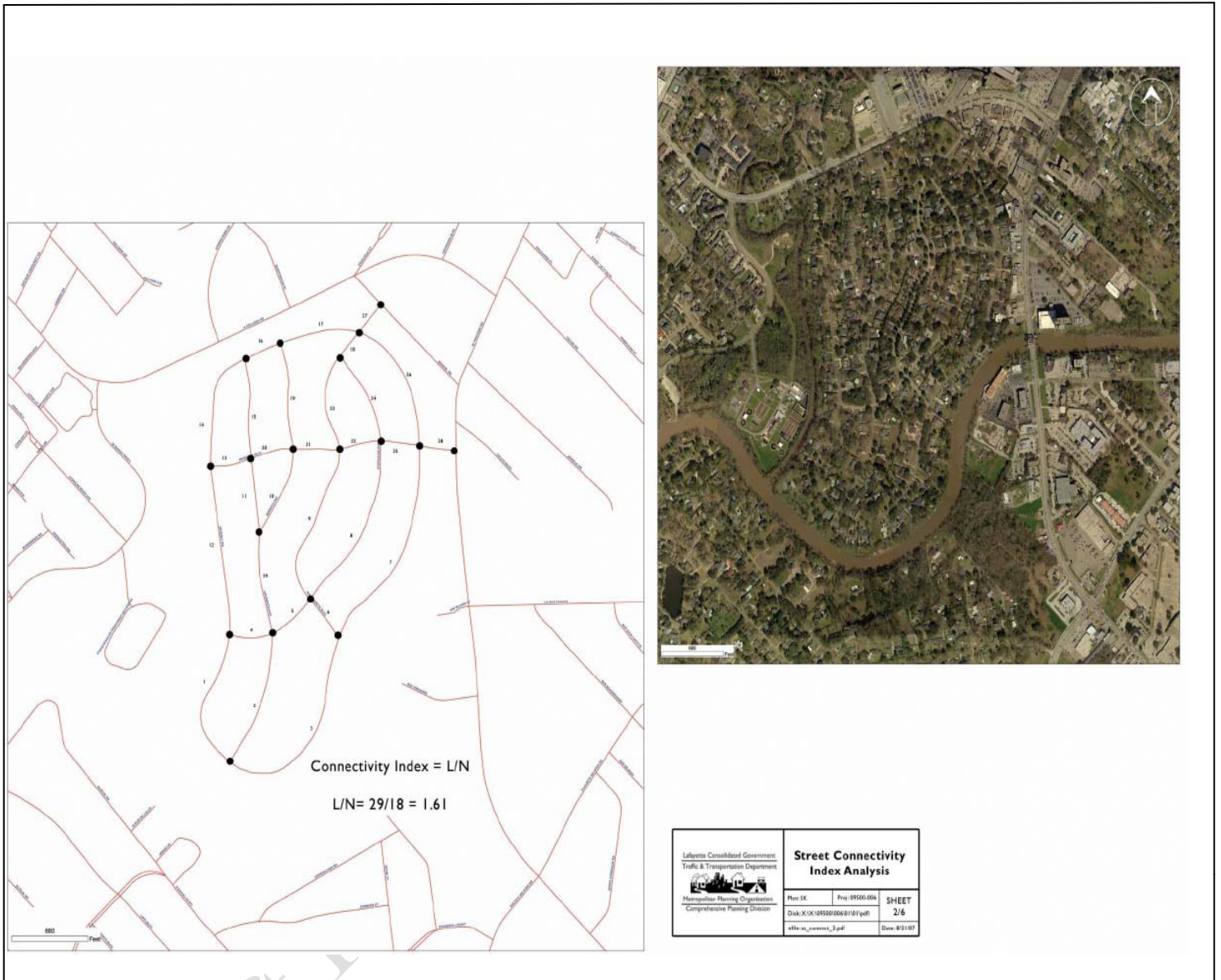
Section 20. Connectivity

1. The street system of a proposed subdivision shall be designed to coordinate with existing, proposed, and planned streets outside of the subdivision as provided in this Section.
2. Wherever a proposed development abuts unplatted land or a future development phase of the same development, street stubs shall be provided as deemed necessary by the Parish to provide access to abutting properties or to logically extend the street system into the surrounding area. All street stubs shall be provided with temporary turnarounds or cul-de-sacs unless specifically exempted by the Public Works Director, and the restoration and extension of the street shall be the responsibility of any future developer of the abutting land.
3. Collector streets shall intersect with collector or arterial streets at safe and convenient locations.
4. Sub collector and local residential access streets shall connect with surrounding streets to permit the convenient movement of traffic between residential neighborhoods or facilitate emergency access and evacuation, but such connections shall not be permitted where the effect would be to encourage the use of such streets by substantial through traffic.
5. When proposing a new subdivision a street connectivity index shall be performed by developer and shall have a value of no less than 1.25 as defined below in the example tables. This is done in order to maximize the amount of options a driver has to get to any one location.

The following example is taken from a subdivision in Lafayette and shall be the format in which any subdivision proposal will be reviewed and approved by public officials.

Links are the segments between intersections, nodes the intersections themselves. Cul-de-sac heads or dead ends count as a node. A higher index means that travelers have increased route choice, allowing more direct connections for access between any two locations.





Commentary: Local governments must maintain a tenuous balance between enhancing accessibility and limiting excessive through traffic in residential areas. These standards strive to address both consideration.

Section 21. Minor Subdivisions

1. The (approving Department) may approve a Minor Subdivision that conforms to the following standards:
 - a) Each proposed lot must be buildable in conformance with the requirements of this Code and all other applicable regulations.
 - b) Each lot shall abut a public or private street for the required minimum lot frontage for the zoning district where the lots are located.
 - c) If any lot abuts a street right-of-way that does not conform to the design specifications of this Code, the owner may be required to dedicate one-half the right-of-way width necessary to meet minimum design requirements.
2. Further subdivision of the property shall be prohibited unless applicants submit a plat or development plan in accordance with requirements for major subdivisions in this Code.

Commentary: This standard prohibits property owners from incrementally subdividing land to avoid review.

3. The (approving Department) shall consider a proposed Minor Subdivision upon the Submittal of the following materials:
 - a) An application form provided by the City/Parish;
 - b) () copies of the proposed Minor Subdivision plat; [*Note: The number of copies required should be based on number of entities that will review the plan under adopted procedures.*]
 - c) A statement indicating whether water and/or sanitary sewer service is available to the property; and
 - d) Land descriptions and acreage or square footage of the original and proposed lots and a scaled drawing showing the intended divisions shall be prepared by a professional land surveyor registered in the State of Louisiana. In the event a lot contains any principal or accessory structures, a survey showing the structures on the lot shall accompany the application.
4. Review Procedure
 - a) The (approving official) shall transmit a copy of the proposed Minor Subdivision to the appropriate (departments or officials) for review and comment.

- b) If the proposed Minor Subdivision meets the conditions of this section and otherwise complies with all applicable laws and ordinances, the (**approving official**) shall approve the Minor Subdivision by signing the application form.
- c) Upon approval of the Minor Subdivision, the (**approving official**) shall record the plat on the appropriate maps and documents, and shall, at the applicant's expense, record the plat in the official county records.

***Commentary:** These requirements for minor subdivisions are adapted from Louisiana's Model Land Development Code and provided here to emphasize the importance of adequate land division controls in access management. They provide for local review of divisions of land or "lot splits" that would otherwise be exempted from subdivision review and platting requirements. A review process for lot splits prevents creation of lots that are not in conformance with land development regulations and thus could be rendered unbuildable. It further prevents creation of lots with inadequate or inappropriate access to a public road. This allows local governments to prevent access problems attributable to flag lots, through lots, and corner lots. This review process is streamlined and platting requirements are less costly than those of a major subdivision, so as not to create a hardship for property owners engaged in only minor subdivision activity. Local governments are strongly advised not to provide exemptions from public review of land division activity based on lot size or number of lots, because this creates long term problems that can seriously undermine the local planning and regulatory program.*

Section 22. Private Roads

1. Private roads may be permitted in accordance with the requirements of this Section and the following general standards shall apply:
 - a) All Parish roads shall be constructed to public specifications and have an easement of a minimum of 66 feet in width, except as otherwise provided in Section 21 (2).
 - b) Private roads that by their existence invite the public in shall have all traffic control features, such as striping or markers, in conformance with the Manual of Uniform Traffic Control Devices.
 - c) The minimum distance between private road outlets on a single side of a public road shall be 660 feet, or less where provided by access classification and standards for state roads and local thoroughfares.
 - d) All properties served by the private road shall provide adequate access for emergency vehicles and shall conform to the approved local street numbering system.
 - e) All private roads shall be designated as such and will be required to have adequate signage indicating the road is a private road and not publicly maintained.
 - f) All private roads shall have a posted speed limit not to exceed twenty miles an hour.

- g) All private roads shall have adequate provisions for drainage and storm water runoff as provided in Section (refer to appropriate section of the local subdivision regulations).
- h) A second access connection to a public road shall be required for private roads greater than 2000 feet in length.
2. Private roads in rural and semi-rural areas may be permitted reductions in easement and roadway width and pavement standards to provide for adequate access while retaining the rural character of the landscape and design flexibility. At a minimum, the private road shall meet the Parish specifications for gravel roadway construction. Other standards shall apply in accordance with the following schedule:
- a) A private road serving up to two lots shall have a minimum right-of-way easement of 30 feet and a roadbed of at least 12 feet.
 - b) A private road intended to serve no more than three to six lots shall have a minimum right-of-way easement of 30 feet and a roadbed of at least 16 feet.
 - c) A private road intended to serve no more than seven to twelve lots shall have a minimum right-of-way easement of 66 feet and a roadbed of at least 20 feet. Paving shall be required for all areas with grades of greater than three (3%) percent. Such pavement shall be a minimum of 18 feet in width.
 - d) A private road intended to serve no more than 13 to 24 lots shall have a minimum right-of-way easement of 66 feet, a road-bed of at least 24 feet and shall be paved.
 - e) A private road intended to serve 25 or more lots or parcels shall provide at least two access connections to a public road and shall meet the minimum design requirements for public roads.

Commentary: *This section provides a sliding scale approach, allowing gravel roads of about 12 feet to 18 feet wide for 2-4 parcels and requiring higher design specifications for larger developments. The standards are intended to provide flexibility and to preserve the character of rural areas. Communities considering a sliding scale approach to private roads should also adopt a site plan review process aimed at encouraging creative site design and landscape preservation.*

A preferred approach, however, is to provide is the lack of variety and design flexibility in public street standards. If your community has problems with sub-standard private roads in urban areas, try providing greater variety in the hierarchy of public streets and more flexibility in public residential street design standards. See for example: J. West and A. Lowe, "Integration of Transportation and Land Use Planning through Residential Street Design," ITE Journal, August 1997, pp. 48-51.)

3. Applications for subdivision approval that include private roads shall include a drainage plan and road construction plan, prepared by a registered engineer. The City/Parish Public Works Official shall review private road plans for conformance with this Code.
4. Construction permits are required for connection to public roads. Application for road construction shall be made concurrent with the creation of a lot that does not have frontage on a public road. A road construction permit shall be issued after approval of the private road plan and the entire length of the road shall be inspected during construction and upon completion. If found in conformance, a final use permit shall be issued.

5. No building permit shall be issued for any lot served by a private road until the private road has been constructed and approved, so that all lots to be served by the private road have access to a public road.
6. A road maintenance agreement, prepared by the City/Parish attorney shall be recorded with the deed of each property to be served by a common private road. The agreement shall provide for:
 - a) A method to initiate and finance a private road and maintain that road in good condition;
 - b) A method of apportioning maintenance costs to current and future users;
 - c) A provision that the Parish Government may inspect, and if necessary, require that repairs be made to the private road to ensure that safe access is maintained for emergency vehicles. If required repairs are not made within six months of date of notice, the Parish Government may make the necessary repairs and assess owners of parcels on the road for the cost of all improvements plus an administrative fee, not to exceed 25% of total costs;
 - d) A provision that the majority vote of all property owners on the road shall determine how the road is maintained except in the case of emergency repairs as outlined above;
 - e) A statement that no public funds shall be used to construct repair or maintain the road;
 - f) A provision requiring mandatory upgrading of the roadway if additional parcels are added to reach the specified thresholds; and
 - g) A provision that property owners along that road are prohibited from restricting or in any manner interferes with normal ingress and egress by any other owners or persons needing to access properties with frontage on that road.
 - h) No private road shall be incorporated into the public road system unless it is built to public road specifications of the Lafayette Consolidated Government. The property owners shall be responsible for bringing the road into conformance.
 - i) All private roads shall have a sign and name meeting (**city/county**) standards and shall include the following notice: "Private Road" "Not maintained by the (**city/county**)".
 - j) An application fee will be established by the Director of Public Works to cover administrative, processing, and inspection costs.
 - k) All purchasers of property served by a private road shall, prior to final sale, be notified that the property receives access from a private road that shall be maintained collectively by all property owners along that road; that the (**city/county**) shall not be held responsible for maintaining or improving the private road; and that a right-of way easement to provide the only access to that property has been recorded in the deed for that property.
 - l) The United States postal service and the local school (board/ district) is not required to use the private road for access to the parcels abutting the private road and may require that service be provided only at the closest public access point.

Commentary: *These private road standards were adapted from sample regulations prepared for the Grand Traverse Bay Region (Planning & Zoning Center, Inc., Lansing, Michigan, September 1992). Some*

communities prohibit private roads altogether or require all private roads serving more than one dwelling unit to be built to public specifications and paved. This is because of problems associated with private roads, such as pressure to adopt the private road into the public road system in the future. Yet if properly regulated, private roads can offer an effective means of access to small subdivisions in rural areas. In the absence of private road regulations, common practice is the creation of multiple lots served by a common lot, easement, or multiple easements as in the example of stacked flag lots. The easement then becomes a private unpaved road serving several properties.

Unregulated private roads raise several problems. They may be inaccessible to emergency vehicles or large delivery trucks, placing public safety and private property at risk. Substandard roads deteriorate quickly and without a maintenance agreement, the local government may be called upon to maintain it. Buyers may not be aware of the maintenance issues associated with the road until after purchasing the property. Narrow rights-of-way may impede placement of utilities, and private roads can exacerbate inefficient land development patterns. These problems can be avoided through private road regulations that address design, construction, joint maintenance agreements, signage, and review. Private roads should be permitted for residential uses only and standards should be tied to lot split (minor replat) or subdivision regulations. Limitations should be placed upon the number of residences that may be served by a single access to a public road.

As in other land development regulations, private road provisions must be made for grandfathering existing nonconforming situations. Some ordinances address the situation by providing a different set of standards for nonconforming private access or by providing for expansion of existing substandard private roads or easements pursuant to the special use permit process.

Section 23. Regulatory Flexibility

1. The Planning Commission may permit departure from dimensional lot, yard, and bulk requirements of the zoning district where a subdivision or other development plan is proposed to encourage creativity in site design, protect natural resources, and advance the access objectives of this Code. Such regulatory modifications under this section are not subject to variance approval by the Board of Adjustment.

Section 24. Site Plan Review Procedures

1. Applicants shall submit a preliminary site plan for review by the Lafayette Planning, Zoning, Codes department at a minimum, the site plan shall show:
 - a) Location of access point(s) on both sides of the road where applicable;
 - b) Distances to neighboring constructed access points, median openings, traffic signals, intersections, and other transportation features on both sides of the property;
 - c) Number and direction of lanes to be constructed on the driveway plus striping plans;
 - d) All planned transportation features (such as auxiliary lanes, signals, etc.);

- e) Trip generation data or appropriate traffic studies;
- f) Parking and internal circulation plans;
- g) Plat map showing property lines, right-of-way, and ownership of abutting properties; and
- h) A detailed description of any requested variance and the reason the variance is requested.

2. Subdivision and site plan review shall address the following access considerations:

- a) Is the road system designed to meet the projected traffic demand and does the road network consist of hierarchy of roads designed according to function?
- b) Does the road network follow the natural topography and pre-serve natural features of the site as much as possible? Have alignments been planned so that grading requirements are minimized?
- c) Is access properly placed in relation to sight distance, drive-way spacing, and other related considerations, including opportunities for joint and cross access? Are entry roads clearly visible from the major arterials?
- d) Do units front on residential access streets rather than major roadways?
- e) Is automobile movement within the site provided without having to use the peripheral road network?
- f) Does the road system provide adequate access to buildings for residents, visitors, deliveries, emergency vehicles, and garbage collection?
- g) Have the edges of the roadways been landscaped? If sidewalks are provided alongside the road, have they been setback sufficiently from the road, and has a landscaped planting strip between the road and the sidewalk been provided?
- h) Does the pedestrian path system link buildings with parking areas, entrances to the development, open space, and recreational and other community facilities?

Commentary: *The subdivision and site plan review process provides local governments with the most effective opportunity for addressing access considerations and preventing access problems before they occur. This should be done as early as possible in the process. Developers will be far less amenable to revising the access plan later in the process or after the site plan or plat has been approved. The above checklist of access review considerations in Section 23(2) was adapted from David Listokin and Carole Walker. The Subdivision and Site Plan Handbook. New Brunswick, NJ: Center for Urban Policy Research, Rutgers University. 1989.*

- 3. The (**city/county**) reserves the right to require traffic and safety analysis where safety is an issue or where significant problems already exist.
- 4. After 30 days from filing the application, applicants must be notified by the (**permitting department**) if any additional information is needed to complete the application.
- 5. Upon review of the access application, the (**permitting department**) may approve the access application, approve with conditions, or deny the application. This must be done within 90 days of receiving the

complete application.

6. Any application that involves access to the State Highway System shall be reviewed by the Louisiana Department of Transportation for conformance with state access management standards. Where the applicant requires access to the State Highway System, and a zoning change, or subdivision or site plan review is also required, development review shall be coordinated with the Louisiana Department of Transportation, as follows:
 - a) An access management/site plan review committee that includes representatives of LADOTD traffic operations, access permitting, and the local government shall review the application. The committee shall inform the developer what information will be required for access review. Information required of the applicant may vary depending upon the size and timing of the development, but shall at a minimum meet the requirements of this section.
 - b) Upon review of the application, the access management review committee shall advise the (permitting department) whether to approve the access application, approve with conditions, or deny the application.
7. If the application is approved with conditions, the applicant shall resubmit the plan with the conditional changes made. The plan, with submitted changes, will be reviewed within 10 working days and approved or rejected. Second applications may only be rejected if conditional changes are not made.
8. If the access permit is denied, the (city/county) shall provide an itemized letter detailing why the application has been rejected.
9. All applicants whose application is approved, or approved with conditions, have 30 days to accept the permit. Applicants whose permits are rejected or approved with conditions have 60 days to appeal.

***Commentary:** Effective coordination with the Louisiana Department of Transportation, the local traffic engineer, transportation planner, and/or public works official is essential to ensure conformance with land division and access requirements. One method of improving coordination is to establish the building permit as the lead permit during development review. In this way, property owners would be required to submit the necessary permits or certificates of approval from regulatory agencies involved in development review before issuing a building permit. This should include a notice of intent to approve the proposed access connection from the Louisiana Department of Transportation where the state highway system is involved to assure conformance with the State Highway System Access Management Act and administrative rules. The above review process would be incorporated into the community's overall subdivision and site plan review process. A conceptual review, before submission of the preliminary site plan or plat, is highly recommended. Communities should also set fees and develop the necessary forms to carry out the provisions of this code.*

Section 25 Variance Procedures

1. The granting of the variation shall be in harmony with the purpose and intent of these regulations and shall not be considered until every feasible option for meeting access standards is explored.

2. Applicants for a variance from these standards must provide proof of unique or special conditions that make strict application of the provisions impractical. This shall include proof that:
- indirect or restricted access cannot be obtained;
 - no engineering or construction solutions can be applied to mitigate the condition; and
 - no alternative access is available from a street with a lower functional classification than the primary roadway.
4. Under no circumstances shall a variance be granted, unless not granting the variance would deny all reasonable access, endanger public health, welfare or safety, or cause an exceptional and undue hardship on the applicant. No variance shall be granted where such hardship is self-created.

Commentary: Each local government has its own process for handling appeals and variances. The standards above should be incorporated to this process. Providing for variances and other remedial measures is crucial to avoiding a takings claim by providing due process to the property owner and avoiding unreasonable hardship that may arise in relation to the regulatory framework. Federal case law has established that property owners should first exhaust available administrative remedies, including appeals to the local board of adjustment, before the case may be heard in a court of law. If local appeal procedures exist and the property owner sues before first pursuing a variance or other remedial action, the case may be invalidated on this basis.

Table 4: Suggested Access Connection Design From FDOT Standard Index*

Trips/Day	1-20		21-600		601-4000	
	or 1-5		or 6-60		or 61-400	
Trips/Hour	URBAN SECTION	RURAL SECTION	URBAN SECTION	RURAL SECTION	URBAN SECTION	RURAL SECTION
Connection Width(2-way)	12' min 24' max	12' min 24' max	24' min 36' max	24' min 36' max	24' min 36' max	24' min 36' max
Flare (Drop Curb)	10' min	N/A	10' min	N/A	N/A	N/A
Returns (Radius)	N/A	15' min 25' std 50' max	small radii may be used	25' min 50' std 75' max	25' min 50' std 75' max	25' min 50' std 50' std (or 3 curves)
Angle of Drive			60'-90'	60'-90'	60'-90'	60'-90'
Divisional Island			4'-22' wide	4'-22' wide	4'-22' wide	4'-22' wide

Source: Florida Department of Transportation Standard Index, Roadway and Traffic Design Standards. 1992.

* Note: These standards are not intended for major access connections carrying over 4000 vehicles per day.

Draft Plan, Do not Distribute